



F900

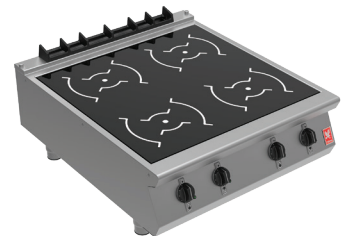
i9085 Four Zone Induction Boiling Top

Key features

- 4 x 5kW induction heat zones
 - Instant heat, rapid heat up
- In-built pan detection delivers energy savings
 - No wasted energy as no pan = no energy generated
- Low heat emissions
 - Much cooler working environment
- Precise temperature control
 - Instant heat, rapid heat up
- 6mm toughened glass hob
 - Robust enough for the toughest kitchen environments
 - Simply wipes clean - no scrubbing after service
- IPX5 rated
 - Easy and problem-free cleaning
- Stainless steel panels with Scotch Brite finish
 - Looks great, ideal for front-of-house kitchens
- Dynamic Link System compatible
 - Integrated linking system allows quick and easy installation to create a seamless, continuous cookline

Accessories

- Fixed stand (ST80)
- Front hob rail
- Kick strip (for stand)
- Rear blanking plate (for stand)
- Side hob extension
- Factory fitted, adjustable castors



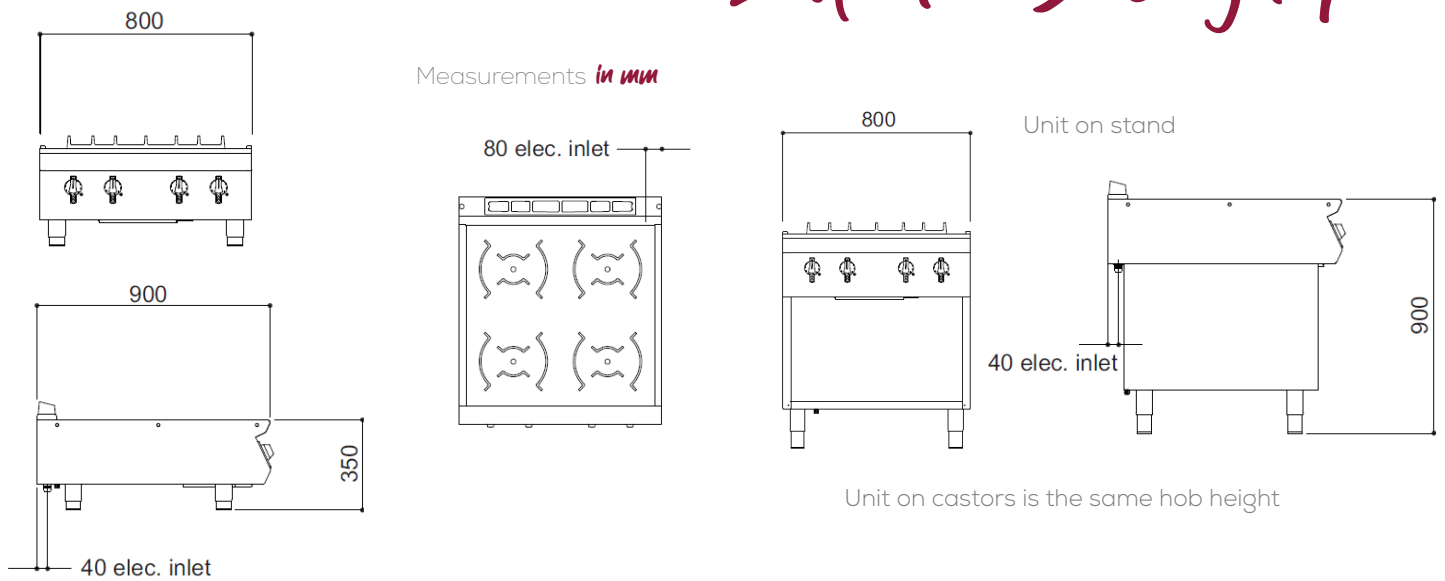
Similar Models

- i9084 4 x 3.5kW induction boiling top
- i9043 2 x 5kW induction boiling top
- E3903i 4 x 3.5kW induction boiling top
- E3904i 4 x 5kW induction boiling top

F900

i9085

Induction Boiling Top



Specification details

Electrical rating (kW)	20
Electrical supply voltage	400V 3N~
Required electrical supply (A)	32
Electrical current split (A)	L1: 28.9, L2: 28.9, L3: 28.9
Element rating - hob (kW)	4 x 5
Heat zone diameter (mm)	270
Minimum pan size (mm)	120
Weight (kg)	66
Weight on stand (kg)	82
Packed weight (kg)	78
Packed dimensions (w x d x h - mm)	1000 x 1000 x 780
GTIN number	

Short Form *specification*

Unit to be Falcon F900 Series induction counter top having 4 x 5kW cooking zones. Unit to be supplied upon adjustable feet or upon optional base unit.

The hob will be constructed from 6mm toughened ceramic glass and 2mm 304 grade stainless steel. Hobs will be laser cut with right-angled edges to allow joining of units with no gaps between hobs. Exterior panels are Scotch Brite finish stainless steel. Control knobs to be marked showing zone variable control settings and to have a bezel behind each knob to prevent water ingress. The unit will have IPX 5 water resistance certification.

Installation note

Please consult local legislation with regard to installation of cooking equipment.



Falcon Foodservice Equipment, Wallace View, Hillfoots Road, Stirling FK9 5PY Scotland
t: +44 (0) 1786 455 200 e: info@falconfoodservice.com www.falconfoodservice.com

i9085/SS/1120