

ITEM	DESCRIPTION	SPARES No
1	GRILL BURNER ASSY	531600230
2	FLOATRAIL ASSEMBLY	531610120
3	CONTROL VALVE NAT & PROPANE	537560020
4	CONTROL VALVE FIXING NUT	535990001
5	CONTROL KNOB	535310010
6	INJECTOR ASSEMBLY (NAT GAS)	531600220
6.1	INJECTOR SEALING WASHER	535990002
7	INJECTOR ASSEMBLY (PROPANE)	531600225
8	CROSS LIGHTER BURNER	535980000
9	CROSS LIGHTER INJECTOR ASSY (NAT GAS)	531610140
10	CROSS LIGHTER INJECTOR ASSY (PROPANE)	531610145
11	PILOT ASSY NAT GAS No30	531600050
11.1	PILOT ORIFICE NAT GAS No30	531600070
12	PILOT ASSY PROPANE No19	531600055
12.1	PILOT ORIFICE PROPANE No19	531600075
13	THERMOCOUPLE	531610010
14	PILOT PIPE C/W OLIVES	535980001
15	Ø 12 FLEXI PIPE C/W OLIVES	535980002
16	BRASS COUPLING C/W OLIVES	734560015
17	BRASS COUPLING 1/2" C/W OLIVES	531610050
18	INLET SOCKET	535990003
18.1	TEST NIPPLE	531600200
19	GOVERNOR 1/2" C/W FITTING	531562410
19.1	FITTING 1/2"	535500020
20	BURNER PLAQUE HOLDER	531600606
21	BURNER PLAQUE (SET OF 8)	535910012
21.1	BURNER PLAQUE	531600010
	CONVERSION KIT NAT GAS TO PROPANE	535980008
	CONVERSION KIT PROPANE TO NAT GAS	535980009

CLEARED FOR PRODUCTION

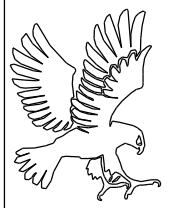
ISSUE	MOD No	ALTERATION	DRAWN BY	DATE
A	1315	ISSUED FOR PRODUCTION	S.MOONEY	15/11/11

IF IN DOUBT ASK
DO NOT SCALE
FIRST ANGLE PROJECTION

UNLESS OTHERWISE SPECIFIED:
DIMENSIONS ARE IN MILLIMETERS
TOLERANCES:
LINEAR: ±0.5mm
ANGULAR: ±0.5 DEG

DEBUR AND
BREAK SHARP EDGES

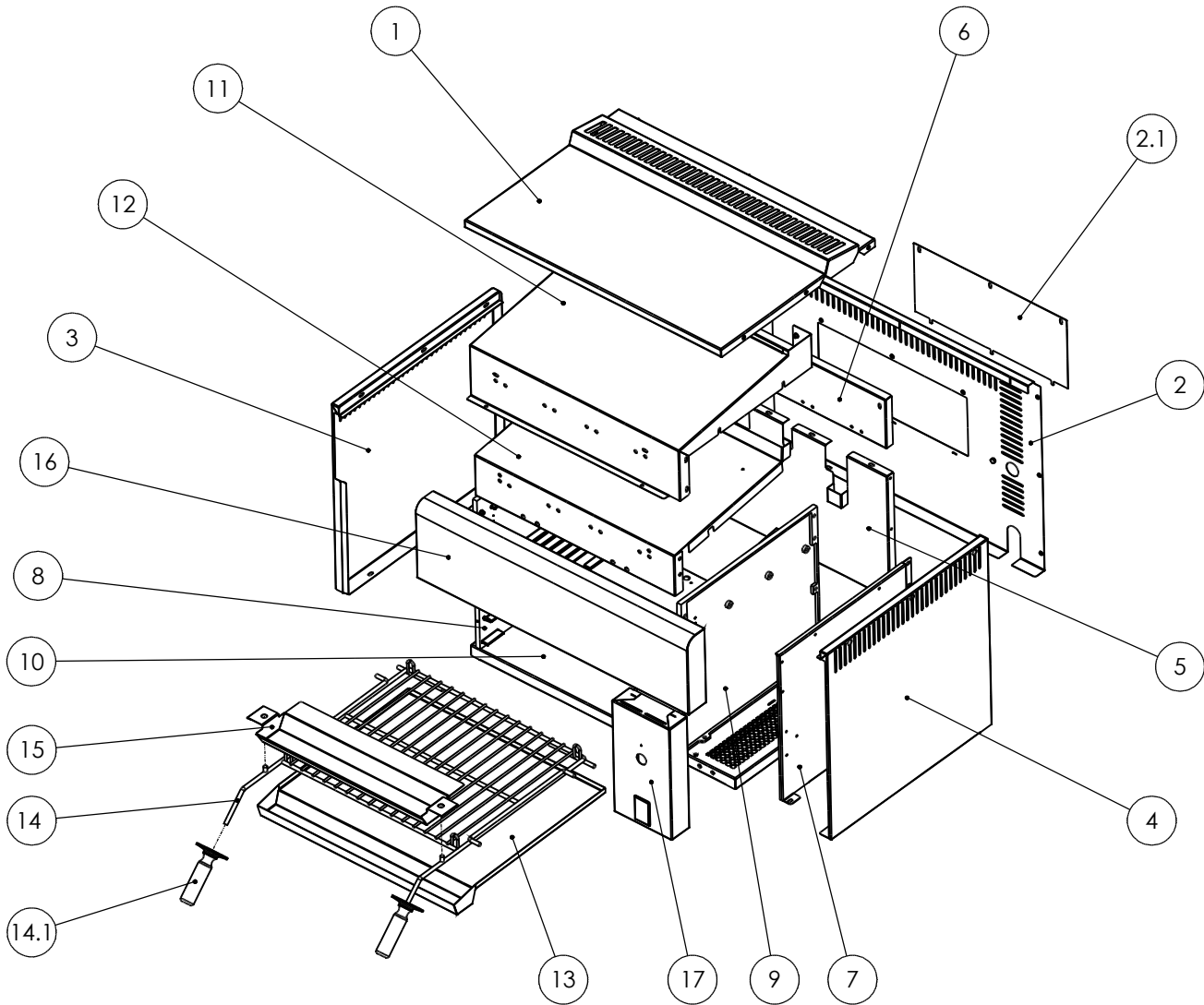
WEIGHT: 65328.28g



DRAWN: S.MOONEY	PRODUCT
DATE: 15/11/11	TITLE
SCALE: 1:5	
MATL:	DRAWING NUMBER
THICKNESS:	FINISH:
BIN No:	PART No:

G3512 GRILL	
SPARES DIAGRAM - CONTROLS	
AD49093	A

© NO REPRODUCTION OR PUBLICATION OF THIS DRAWING MAY BE MADE AND NO ARTICLE MAY BE MANUFACTURED OR ASSEMBLED IN ACCORDANCE WITH THIS DRAWING WITHOUT PRIOR WRITTEN CONSENT. THIS PROHIBITION IS A TERM OF ANY CONTRACT RELATING TO THIS DRAWING. RIGHTS RESERVED UNDER THE COPYRIGHT ACT 1956 AS AMENDED BY THE DESIGN COPYRIGHT ACT 1968



ITEM	DESCRIPTION	SPARES No
1	OUTER TOP	531610170
2	OUTER BACK ASSEMBLY	535980003
2.1	BACK PANEL COVER PLATE	535980004
3	OUTER SIDE LH	731600000
4	OUTER SIDE RH	531610250
5	INNER BACK	531610380
6	TOP INNER BACK	531610160
7	LAGGING PANEL	535980005
8	INNER SIDE LH	531610390
9	INNER SIDE RH	531610350
10	BASE PANEL	531610190
11	COOLING PLATE	731600002
12	INNER TOP PANEL	531610200
13	DRIP TRAY	731600004
14	WIRE GRID C/W HANDLES	535980006
14.1	HANDLE ASSEMBLY	535900010
15	DRIP TROUGH	731600003
16	FRONT FACIA PANEL	731600005
17	CONTROL PANEL	535980007

CLEARED FOR PRODUCTION

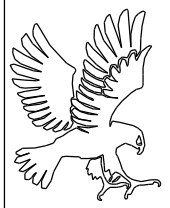
ISSUE	MOD No	ALTERATION	DRAWN BY	DATE
A	1315	ISSUED FOR PRODUCTION	S.MOONEY	16/11/11

IF IN DOUBT ASK
DO NOT SCALE
FIRST ANGLE PROJECTION

UNLESS OTHERWISE SPECIFIED:
DIMENSIONS ARE IN MILLIMETERS
TOLERANCES:
LINEAR: ±0.5mm
ANGULAR: ±0.5 DEG

DEBUR AND
BREAK SHARP EDGES

WEIGHT: 65328.28g



DRAWN: S.MOONEY	PRODUCT		G3512 GRILL
DATE: 16/11/11	TITLE		
SCALE: 1:10	SPARES DIAGRAM - FITMENTS		
MATL:	DRAWING NUMBER	ISSUE	
THICKNESS:	FINISH:	AD49092	A
BIN No:	PART No:		

© NO REPRODUCTION OR PUBLICATION OF THIS DRAWING MAY BE MADE AND NO ARTICLE MAY BE MANUFACTURED OR ASSEMBLED IN ACCORDANCE WITH THIS DRAWING WITHOUT PRIOR WRITTEN CONSENT. THIS PROHIBITION IS A TERM OF ANY CONTRACT RELATING TO THIS DRAWING. RIGHTS RESERVED UNDER THE COPYRIGHT ACT 1956 AS AMENDED BY THE DESIGN COPYRIGHT ACT 1968